

## **Archaeological Material From Spa Ghyll Farm, Aldfield**

### **Introduction**

Following discussions with Linda Smith the Rural Archaeologist for North Yorkshire County Council, Robert Morgan of 3D Archaeological Society based in Harrogate, visited Spa Ghyll Farm in Aldfield North Yorkshire (NGR SE 2616 6924). The purpose of this visit was to see if there were any visible signs of a Deserted Medieval Village and to establish contact with the landowner.

After gaining permission from Kate Matyear (landowner) to visually inspect her land for archaeological features, further visits were made by Robert Morgan accompanied by John Buglass, Professional Archaeologist and John MacIllwaine of the Department of Archaeological Sciences at the University of Bradford.

These visits established that the site appears to have a wealth of archaeological features from a wide range of archaeological periods all of which 3D Archaeological Society would like to investigate with permission from the land owner. Some of which are:

- Archive materials held at the farm.
- Deserted Medieval Village.
- An orchard now devoid of trees but with many ridges and undulations in the land some with stone buried within them.
- Old boundary hedges and ditches.
- Possible walled Drove Way.
- Bronze Age burial mound with associated cup marked stone.
- Large spring fed pond devoid of fish and vegetation. The water probably has a high alkaline level as it is on limestone.
- Lynchets and evidence of medieval ridge and furrow fields
- Suggestions were made that the field with the pond and lynchets could have been used in prehistory and if that were the case, the accommodation area would probably be in the field (field A) overlooking the pond field.

The landowner was in the process of preparing this field for planting with wheat and permission was granted for Robert Morgan to metal detect on 11<sup>th</sup> October 2007 and for 3D Archaeological Society to field walk the above field on the 21<sup>st</sup> October 2007.

Due to the size of field A, the metal detecting was carried out using a random search pattern to try and gauge the type and number of metal finds the field held.

However, the discovery position of any significant finds was pinpointed using a Garmin Ground Positioning System.

So as to cover as much of the field as possible in the one day available to the society, the field walk was carried out in transects across the field 20 metres wide. The weather was dry, warm and bright, not ideal conditions for field walking. Each transect was walked down and then back in the opposite direction. All finds were bagged together and marked Transect 1, Transect 2 etc.

The highest point of the field was flat, sloping down to the east and its common boundary with another field (field B) which was sloping up from this common boundary, again to the east. Transect one was laid out using a measuring wheel and bamboo canes from this common boundary (see diagram fig.1).

The field walkers were: Robert Morgan; Jim Halliwell; Jackie Wigglesworth; Kevin Richardson; Jan Gellert-Jones; Maxine Love; Victoria Wilson; Carol Covill; Paul Warner; Tom Goundry; Chris Williams all members of 3D Archaeological Society and John Buglass professional archaeologist. Later in the day, the landowner's daughter Julia joined us and walked over areas we had already covered. Julia's finds have been kept separate and as we cannot be sure which transect they were found in.

### **Field Walkers Finds**

Transect 1:

- 4 Microliths Mesolithic
- 1 Blade Mesolithic
- 4 Flakes with secondary working Mesolithic
- 11 Waste Flakes
- Pottery sherds, animal bone, animal tooth, clay pipe to be identified at a later date, but not thought to be earlier than post medieval.

Transect 2:

- 9 Blades Mesolithic
- 3 Flint cores, 1 fire cracked Mesolithic
- 2 Waste flakes
- Debitage or natural
- Pottery sherds, animal bone, glass slag, clay pipe to be identified at a later date, but not thought to be earlier than post medieval.

Transect 3:

- 9 Blades Mesolithic
- 2 Microliths Mesolithic
- 1 Core, heavily worked
- 4 Waste flakes

- Pottery sherds, animal bone, glass slag, clay pipe to be identified at a later date, but not thought to be earlier than post medieval.

Transect 4:

- 4 Blades Mesolithic
- 6 Waste flakes
- Debitage or natural
- Pottery sherds, animal bone, glass slag, clay pipe to be identified at a later date, but not thought to be earlier than post medieval.

Transect 5:

- 2 Blades Mesolithic
- Waste,debitage or natural
- Pottery sherds, animal bone, glass slag, clay pipe to be identified at a later date, but not thought to be earlier than post medieval.

Transect 6:

- 2 Blades, 1 with hinge fracture Mesolithic
- 2 Waste Flakes
- Debitage or natural
- Pottery sherds, animal bone, glass slag, clay pipe to be identified at a later date, but not thought to be earlier than post medieval.

Transect 7:

- Blade Mesolithic
- Waste flake off the core Mesolithic
- Pottery sherds, animal bone, glass slag, clay pipe to be identified at a later date, but not thought to be earlier than post medieval.

Transect 8:

- Waste flake
- Pottery sherds, animal bone, glass slag, clay pipe to be identified at a later date, but not thought to be earlier than post medieval.

Julia's Finds:

- 2 Blades Mesolithic
- 1 Medieval green glaze pottery sherd

At this stage any further transects would be extremely long due to the change in shape of field A, so it was decided that we would carry out 2 transects of field B adjoining field A to complete the days work.

Transect A of Field B:

- 1 Blade Mesolithic
- Pottery sherds

Transect B of Field B:

- Thumb scraper Neolithic
- Waste flake

Whilst metal detecting field A, Robert Morgan found the following items:

- Iron farm implements etc
- 1904 Edward VII penny
- 1969 Elizabeth II 5 new pence
- Modern belt buckle
- Copper alloy ring possibly from farm machinery
- Copper alloy cooking pot leg C1350 – 1850
- 1 Small blue glass bead possibly Iron Age or Saxon
- 1 Small piece of Samian Ware Roman
- 1 Thumb scraper Neolithic

The flint identifications and those above were put forward by Liz Andrews-Wilson the Finds Liaison Officer for North and East Yorkshire Portable Antiquities Scheme who is based at York and who will stand corrected should there be alternative identifications.

## **Discussion**

There appears to have been some settled activity on part of this field, just in the lee of the hill it is formed on. This could be a hunting camp or the beginnings of a more settled existence such as a small homestead. A further ploughing and rolling of the field after this years harvest may bring more artefacts to the surface. These could be plotted using a further field walk but this time using a 10m or 20m grid pattern in the areas where the majority of the flint items were found. This would then provide information as to what further action should be taken, if any, to establish exactly what activity early man was carrying out on this site. This particular part of the whole Spa Ghyll Farm site might benefit from a geophysical survey, but the cost of this would be prohibitive to a small a group as 3D Archaeological Society.

Figure 1



Thumbnail Scraper (Front) - Neolithic



Thumbnail Scraper (Reverse) - Neolithic



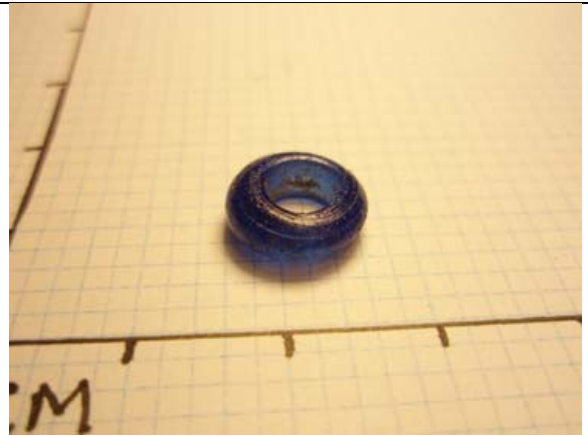
Metal Ring



Copper Alloy Cooking Pot Foot



Mesolithic Blades



Iron Age or Saxon Blue Bead?

## **Field Walking - Season 2**

### Introduction

Following the successful harvest of the crop in Fields A & B, the landowner decided to plough, roll and replant these fields for one more crop before allowing the field to stand fallow.

Permission was granted to 3D Archaeological Society to again carry out a field walk on the field and on the 2nd November 2008, Robert Morgan, John Buglass, Angela Millington, Isabella Ladigus, Sue I'Anson, Maxine Love, Kevin Richardson, Jan Gellert-Jones and Tom Goundry returned to the site and carried out a field walk using a 10m grid pattern over the same area covered by the field walk in 2007. The grid was laid out as 7 columns A to G and six rows 1 to 6 (see diagram fig. 2).

The resulting flint finds were inspected by Liz Andrews - Wilson, the Finds Liaison Officer for North and East Yorkshire Portable Antiquities Scheme and are described below:

#### Grid Square A1

- No Flint Finds

#### Grid Square A2

- 1 Mesolithic Blade coloured by iron staining
- 1 Glazed Pot Sherd

#### Grid Square A3

- 1 Large Late Mesolithic To Bronze Age Retouched Blade
- 1 Waste Flake
- 1 Chert Flake
- 1 Pot Sherd

#### Grid Square A4

- 1 Large Neolithic Waste Flake
- 1 Clay Pipe Stem Segment And Bowl

#### Grid Square A5

- 2 Mesolithic Fire Damaged Worked Flints
- 2 Pot Sherds

#### Grid Square A6

- 1 Mesolithic Waste Flake
- 3 Glazed Pot Sherds

#### Grid Square B1

- 3 Late Mesolithic Worked Flints, 1 With A Hinge Fracture

#### Grid Square B2

- 1 Chert Waste Flake

#### Grid Square B3

- 2 Mesolithic Debitage Flakes
- 1 Clay Pipe Segment
- 4 Pot Sherds, Possibly Victorian

#### Grid Square B4

- 4 Mesolithic Debitage Flakes
- 1 Poor Flint or Chert Flake
- 1 Piece of Lead

#### Grid Square B5

- 2 Mesolithic Waste Flakes

#### Grid Square B6

- 4 Mesolithic Waste Flakes
- 2 Pot Sherds, Possibly Victorian

#### Grid Square C1

- 1 Possible Mesolithic Microlith

#### Grid Square C2

- 1 Mesolithic Waste Flake
- 4 Undiagnostic Flints

#### Grid Square C3

- 1 Mesolithic Waste Flake
- 2 Chert Flakes
- 1 Clay Pipe Segment

#### Grid Square C4

- 1 Mesolithic Waste Flake



- 2 Pot Sherds
- 1 Clay Pipe Segment
- 1 Piece of Glass
- 1 Fossil of a Shell

#### Grid Square C5

- 1 Mesolithic Flint Blade
- 1 Mesolithic Chert Blade

#### Grid Square C6

- 1 Mesolithic Pot Boiler
- 2 Mesolithic Blades
- 2 Mesolithic Microliths
- 1 Mesolithic Waste Flakes
- 2 Pot Sherds
- 1 Clay Pipe Segment
- 1 Piece of Glass

#### Grid Square D1

- 1 Mesolithic Waste Flake
- 1 Clay Pipe Segment
- 1 Pot Sherd

#### Grid Square D2

- 1 Pot Sherd

#### Grid Square D3

- 1 Heavily Utilised Mesolithic Core Fragment
- 1 Mesolithic Waste Flake
- 2 Clay Pipe Segments
- 1 Pot Sherd

#### Grid Square D4

- 2 Mesolithic Blades
- 2 Clay Pipe Segments
- 1 Pot Sherd

#### Grid Square D5

- 1 Mesolithic Waste Flake
- 1 Clay Pipe Segment

Grid Square D6

- 1 Mesolithic Waste Flakes
- 7 Mesolithic Waste Blade Flakes

Grid Square E1

- 2 Clay Pipe Segments
- 1 Pot Sherd

Grid Square E2

- 1 Mesolithic Waste Blade Flake
- 1 Worked Chert

Grid Square E3

- 3 Mesolithic Waste Blade Flakes
- 1 Neolithic Thumb Scraper

Grid Square E4

- 2 Mesolithic Waste Flakes
- 1 Waste Chert Flake

Grid Square E5

- 2 Clay Pipe Segments

Grid Square E6

- 1 Mesolithic Waste Micolith
- 1 Mesolithic Waste Flake
- 1 Clay Pipe Segment

Grid Square F1

- 2 Possible Mesolithic Microliths
- 1 Clay Pipe Segment

Grid Square F2

- 1 Mesolithic Waste Flake

Grid Square F3

- 1 Mesolithic Waste Flake

- 1 Clay Pipe Segment
- 2 Pot Sherds

#### Grid Square F4

- 2 Mesolithic Waste Flakes
- 1 Fossil of a Shell
- 1 Clay Pipe Segments

#### Grid Square F5

- 1 Mesolithic Blade Fragment
- 1 Clay Pipe Bowl Fragment

#### Grid Square F6

- 3 Mesolithic Waste Flake
- 2 Mesolithic Fire Cracked Flints
- 1 Pot sherd
- 1 Clay Pipe Segment

#### Grid Square G1

- 1 clay Pipe Segment

#### Grid Square G2

- No Flint Finds

#### Grid Square G3

- 1 Mesolithic Blade
- Possible Mesolithic Microlith

#### Grid Square G4

- 1 Mesolithic Waste Flake
- 1 Neolithic Waste Flake
- 1 Clay Pipe Segment
- 2 Pot Sherds

#### Grid Square G5

- 1 Mesolithic Blade
- 1 Fossil
- 1 Pot Sherd Possily Victorian

## Grid Square G6

- 1 Mesolithic Fire Cracked Debitage Flakes

### **Discussion**

This field walk has reinforced the findings of the last field walk and the need to carry out a geophysical survey of Field A to see if signs of past life can be identified, such as the hearth that has caused the fire cracking on some of the flints found.